

Sealed Clamshell Bucket Gripper - Type SG06 -

Characteristics:

- ideal for gripping bulk good like granules or standard parts
- radial bucket movement
- short cycle time
- completely sealed mechanics
- user defined installation position
- maintenance free up to 10 million movements
- compact design
- modular design
- multiple position checks through proximity switches (optional)
- customized buckets available on request



Technical Specifications

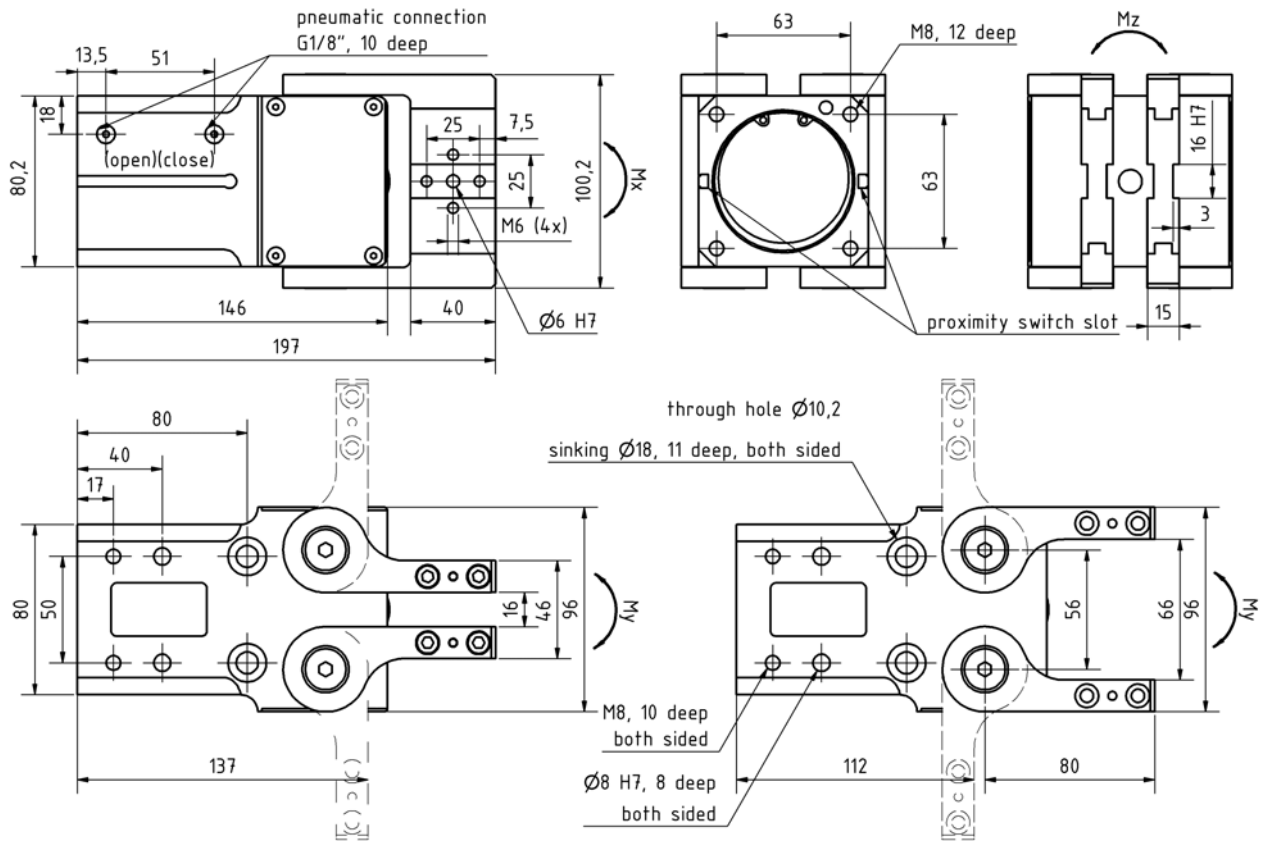
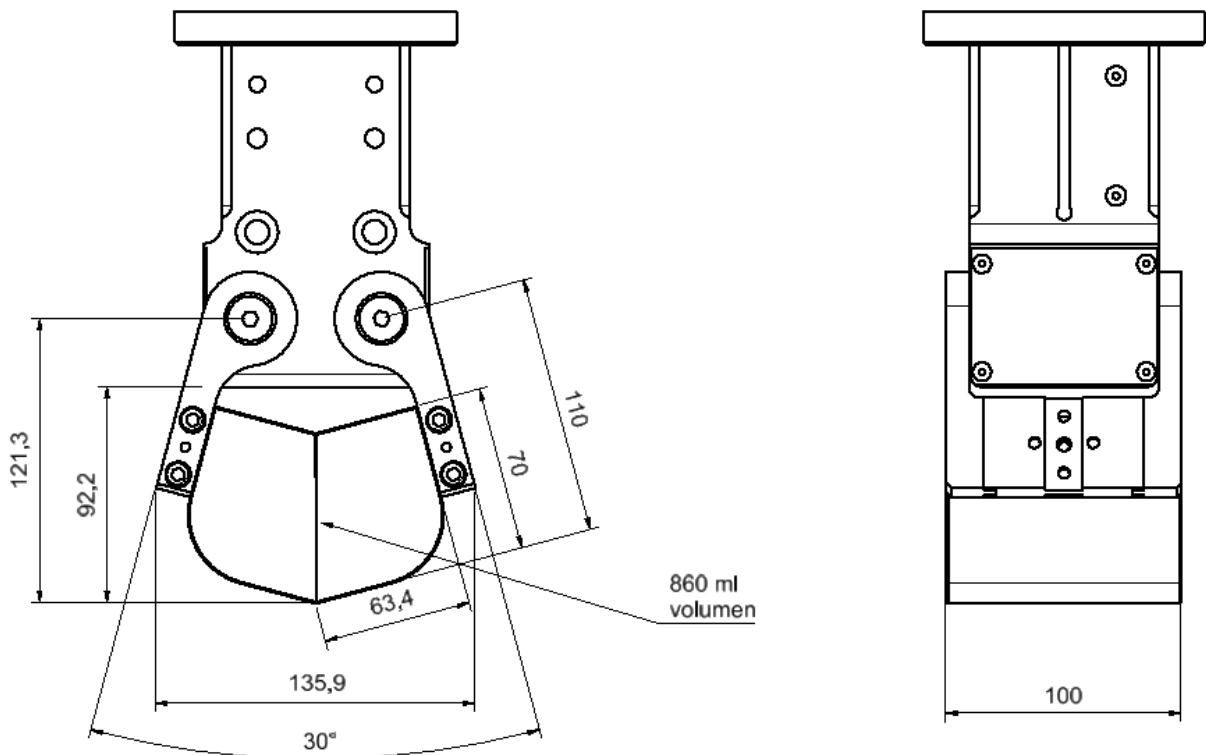
Type		SG06
Drive		pneumatic
max. Grip Force (at 6 bar) *		290 N
max. Torque (at 6 bar) **		36 Nm
Operating Air Pressure		0,5 to 6 bar
Cycle Time	Open	0,15 s
	Close	0,15 s
Repeat Accuracy		0,1 mm
Energy Consumption per Cycle		0,1 liter (at 6 bar)
Operating Temperature		-30 to +80°C
Mass		2.7 kg
Loading Capacity* per bucket with Gripping Mass and Acceleration	Mx _{max.}	100 Nm
	My _{max.} (Gripping)	36 Nm
	Fz _{max.}	20000 N
	Mz _{max.}	100 Nm

* At buckets outer edge in completely closed position

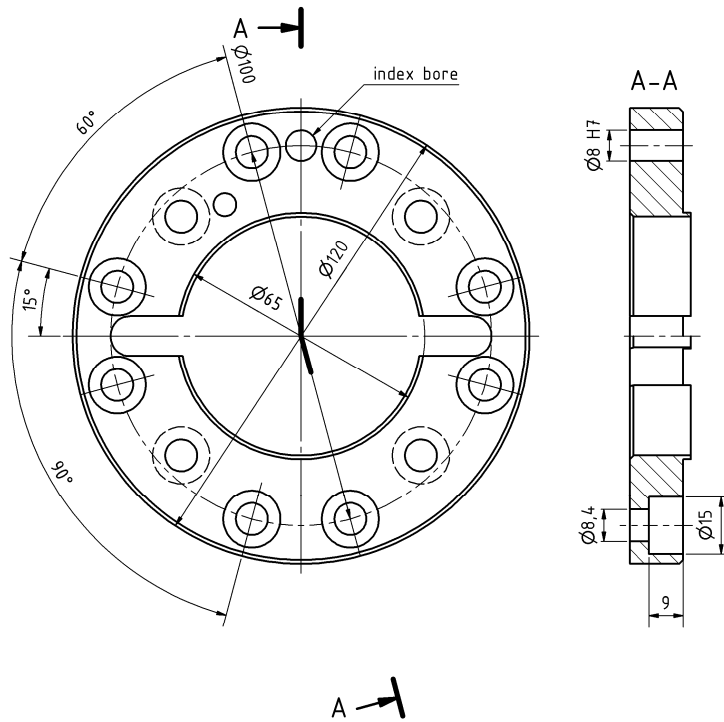
** Grip force per bucket is half of this torque divided by distance to the axis

By using the given torque M [Nm], the required air pressure p_{req} can be calculated with the following formula when the buckets are closed:

$$0,5 \text{ bar} \leq p = \frac{M \text{ bar}}{6 \text{ Nm}} \leq 6 \text{ bar}$$

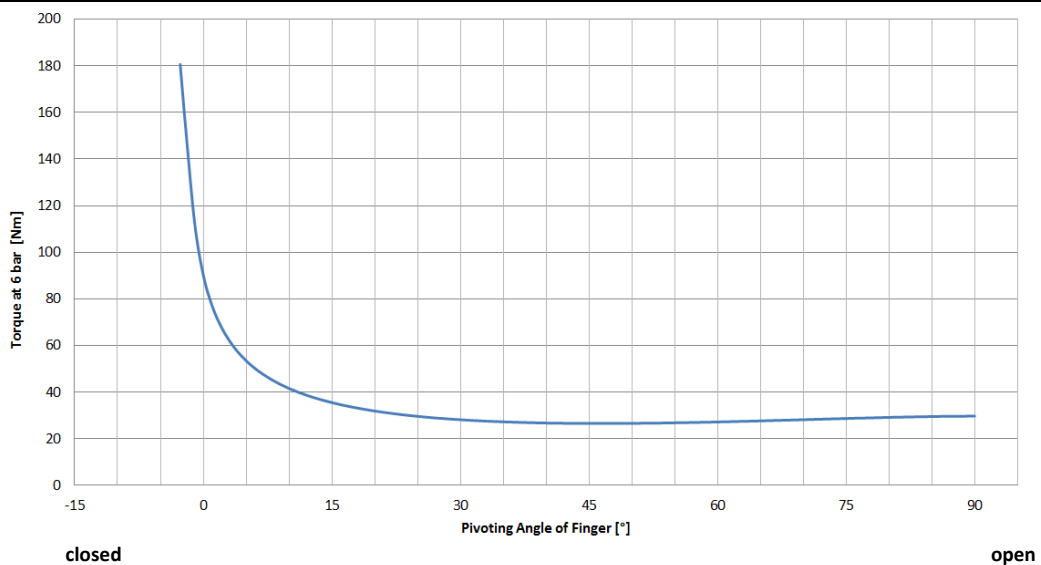
Type SG06 (Body + Doublefinger)

Type SG06 (Standard Buckets)


Flange



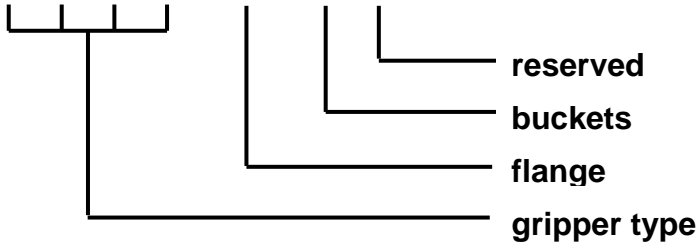
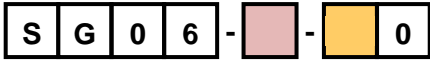
Used to mount the gripper to a robot

Diagram



Torque curve also available in mirrored version upon request.

Order Number



Flange	
style	ident
with flange	N
without flange	O

Bucket	
style	ident
with standard bucket	S
without standard bucket	O